

# TASKING ASM196 Assembler

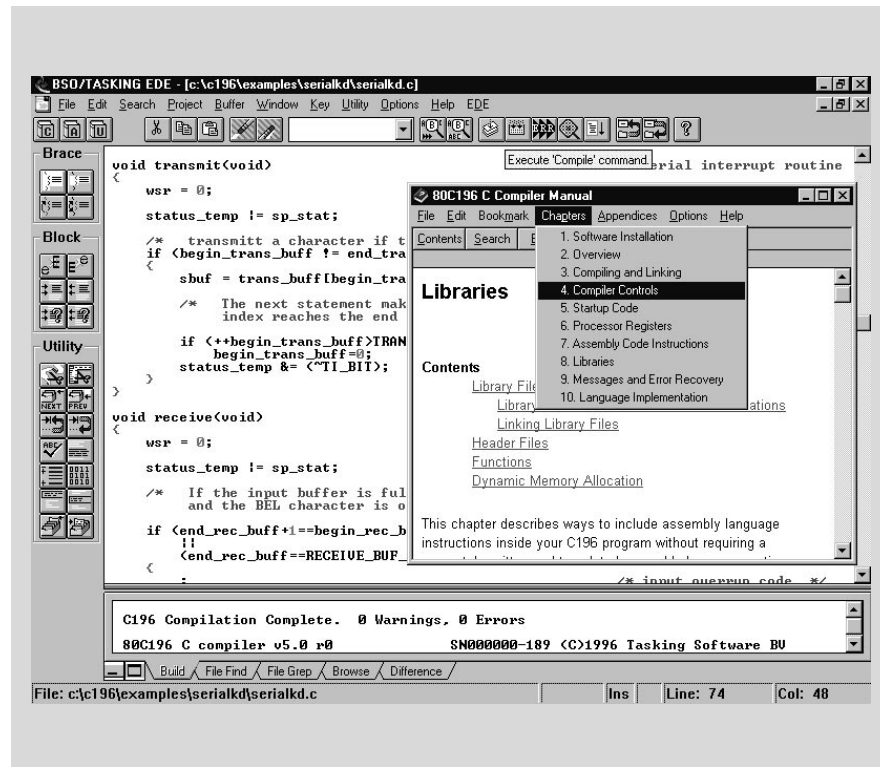
- Windows\* Based Embedded Development Environment
- Register Overlaying
- Generates Relocatable Object Code and Listing Files
- Optimizes Generic Intel MCS® 96 Microcontroller Instructions
- Intel Compatible Linker Control Files
- Conditional Assembly
- Incremental Linking
- Intel Compatible Assembler Source
- Extensive Map Files and Diagnostic Messages
- Full Intel OMF-96 and Intel Hex

## Assembler

The assembler package consists of macro assembler, linker/locator, utilities and EDE our Windows based embedded development environment. The assembler translates Intel's MCS 96 microcontroller assembly language into relocatable object code. The assembler accepts Intel compatible assembler source programs and produces relocatable (.obj) object files. An absolute or executable load image is then obtained by using the linker/locator. It supports all members of Intel's MCS 96 microcontroller family and is compatible with high level and assembly level debuggers.

## Linker/Locator

The linker/locator is an essential part of the software building process that enables you to configure the code to match your target environment. The linker/locator brings together all the necessary relocatable objects, including library modules, resolves external references and then locates the modules in memory according to your specification. Features include ROM/RAM segmentation, intermodule type checking, register overlaying, INST pin support to allow ROM/RAM overlap and incremental linking. The linker accepts object files in Intel OMF-96 format and supports Intel compatible linker control files.



## Utilities

The librarian lets you create a library, add object modules to a library, remove object files from a library and list the contents of a library. Make is a utility that automates the task of building or reconstructing your application. It prevents errors by ensuring that applications can be accurately rebuilt and saves time by re-assembling only modules that changed since the last build. Make can be invoked from the EDE by clicking on the Make button in the ribbon bar or from the command line. A format conversion utility allows you to create output files in Intel-hex format.

Third-Party Support includes interoperability with emulators (such as Checkmate, ComAp, Huntsville, iSystems, Kontron, K&S, Lauterbach, Microtek, Microtime, Nohau, Orion Instruments, Signum Systems) and other tools (Inform FuzzyTECH96, ChipTools ChipView96, Intel ApBUILDER).

MICROCONTROLLERS  
SUPPORTED:  
8x196Kx/Mx/Nx, 80296SA

DEVELOPMENT PLATFORMS:  
Windows 3.1, Windows 95, Windows NT,  
Extended DOS, Sun SPARC/SunOS, Sun  
SPARC/Solaris, HP9000, DEC Alpha,  
VAX/VMS

AVAILABILITY:  
Now

CONTACT:  
TASKING, Inc.  
Norfolk Place, 333 Elm Street  
Dedham, MA 02026  
Phone: (617) 320-9400  
(800) 458-8276  
FAX: (617) 320-9212  
e-mail: sales\_us@tasking.nl  
WWW: http://www.tasking.nl  
For international contacts, see Appendix B.

 **TASKING**  
Quality Development Tools Worldwide